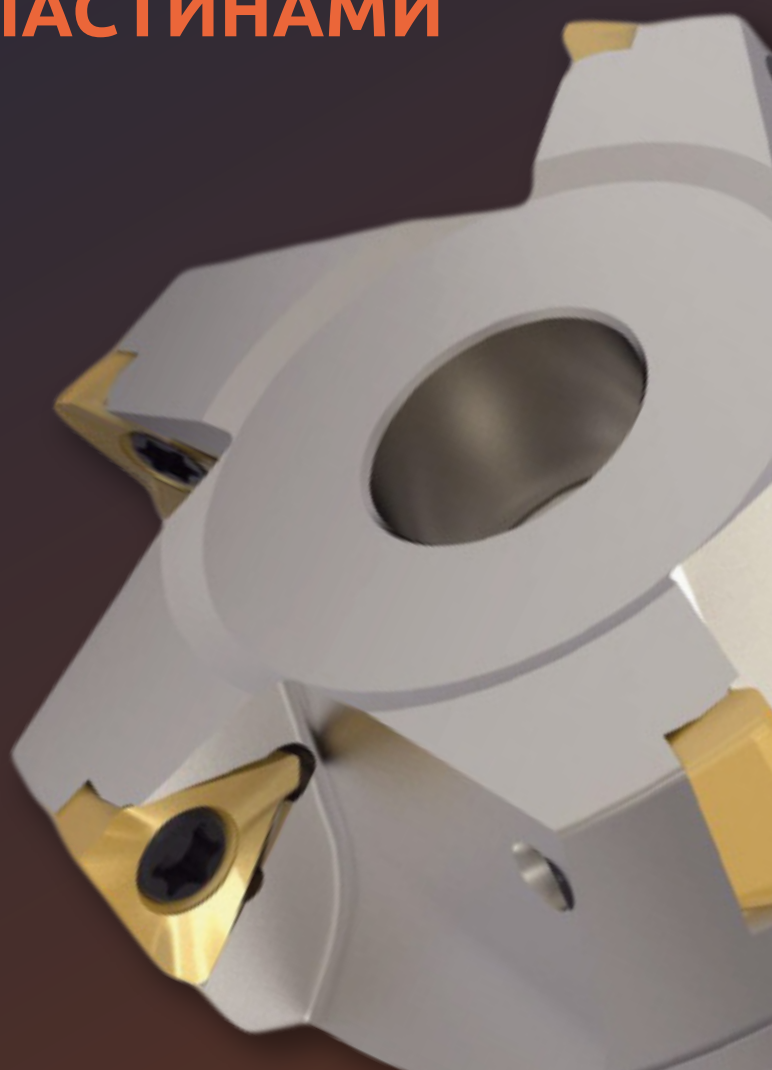
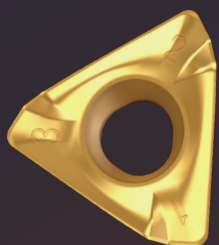




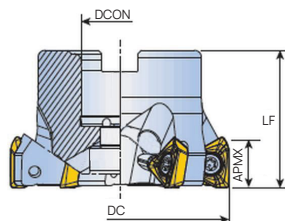
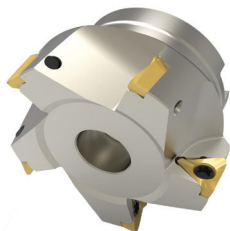
НОВИНКИ

ФРЕЗЫ ДЛЯ ОБРАБОТКИ УСТУПОВ
СО СМЕННЫМИ **ПЛАСТИНАМИ**

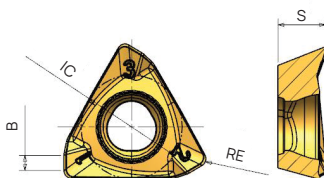


Угол в плане: 90°.

Пластины позитивные, 3 режущие кромки



Обозначение	Z	DC	DCON	LF	APMX	Масса, кг	Режущая пластина
A1S903P15-050S22Z4	4	50	22	40	11,0	0,3	ЗПКТ1505
A1S903P15-050S22Z5	5	50	22	40	11,0	0,3	
A1S903P15-063S22Z4	4	63	22	40	11,0	0,5	
A1S903P15-063S22Z6	6	63	22	40	11,0	0,5	
A1S903P15-080S27Z4	4	80	27	50	11,0	1,0	
A1S903P15-080S27Z7	7	80	27	50	11,0	1,0	
A1S903P15-080S27Z8	8	80	27	50	11,0	1,0	
A1S903P15-100S32Z6	6	100	32	50	11,0	1,8	
A1S903P15-100S32Z8	8	100	32	50	11,0	1,8	
A1S903P15-100S32Z10	10	100	32	50	11,0	1,8	
A1S903P15-125S40Z7	7	125	40	63	11,0	3,0	
A1S903P15-125S40Z10	10	125	40	63	11,0	3,0	
A1S903P15-125S40Z12	12	125	40	63	11,0	3,0	
A1S903P15-160S40Z12	12	160	60	63	11,0	4,4	
A1S903P15-160S40Z15	15	160	60	63	11,0	4,4	
A1S903P15-200S60Z15	15	200	60	63	11,0	6,0	
A1S903P15-200S60Z18	18	200	60	63	11,0	6,0	



Винт: CST4010

Ключ: CTS15W

Обозначение	Размеры				Сплавы			
	IC	S	B	RE	A1P620	A1C320	A1P220	A1U415
ЗПКТ 150508R-M	10,7	5,0	1,6	0,8	●	●		
ЗПКТ 150508R-ML	10,7	5,0	1,6	0,8	●	●	●	
ЗПНТ 150508R-AL	10,7	5,0	1,6	0,8				●